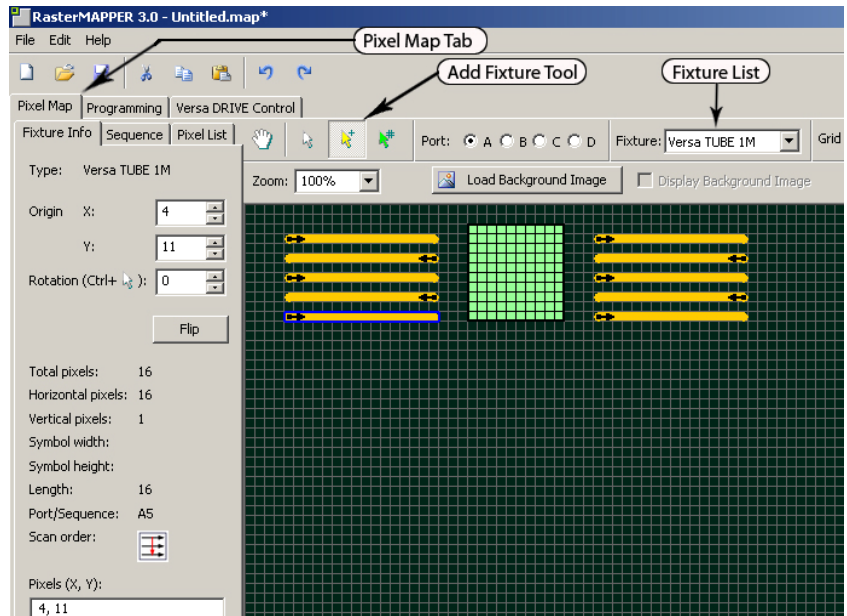


RasterMAPPER is a system mapping and pattern creation software tool for use with Element Labs Versa TILE, Versa TUBE, and Versa RAY systems. RasterMAPPER is available for download from www.elementlabs.com.

To create a Versa System Map and load content into a Versa DRIVE C1 or Versa Drive D2:

1. Install and open RasterMAPPER
2. Create a Map of your Versa System
 - Select **Pixel Map Tab**
 - Select **Add Fixture Tool**
 - Select type of fixture to add from **Fixture List**.
 - Place fixture(s) in pixel grid
 - If your fixture is not in the list create a new fixture with the edit/add function located within the fixture list.



3. Program the Versa DRIVE D2 or C1

To program a Versa Drive D2:

1. Connect computer's RS232 serial port to a Versa DRIVE D2
2. Press **Send Map To Versa DRIVE** button located in the lower left portion of the Pixel Map Tab
3. Click on **Versa DRIVE Control** Tab and set Output to Video or a Test Pattern

To program a Versa Drive C1:

1. Click on **Programming** tab in RasterMAPPER
2. Click **ADD** Button and load an animation or video from your hard drive
3. Preview the results by clicking the playback control in the lower left portion of the programming window
4. Click the **Export CFF** button and name the file. (NOTE: The filename MUST begin with three (3) numbers, ie. "001video.cff". See C1 manual for more information)
5. Place the compact flash card into a C1. The C1 MUST be OFF when inserting or removing a CompactFlash® Card.
6. Turn on the C1 select a pattern